

High frequency CT clamp type

CT Clamp type standard CT only for high frequency -2kHz ~ 30MHz-

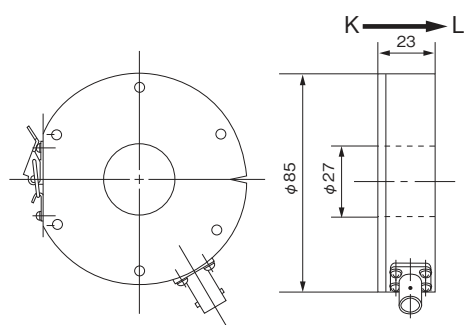


Model CTL-28-S90-05Z-1R1-CL1

[Features]

- Standard CT only for high frequency corresponding to 2kHz~30MHz
- Suitable to standard current sensor for test and research
- Excellent noise resistance by inserting into aluminum case
- Measurement of each type of high frequency and pulse current. Suitable to wide application for wave monitoring
- Suitable to wave monitoring by oscilloscope, because output is BNC connector voltage output type

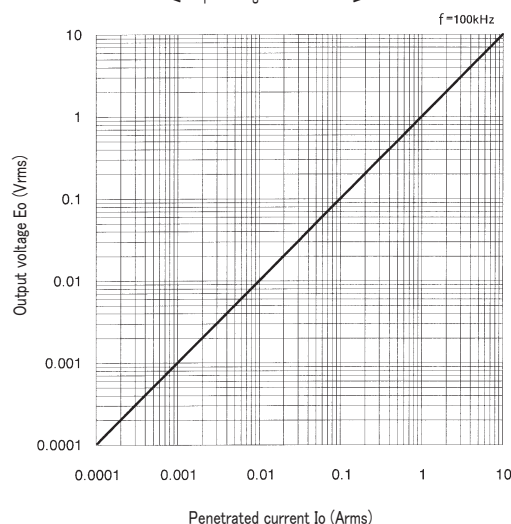
[Outline drawing]



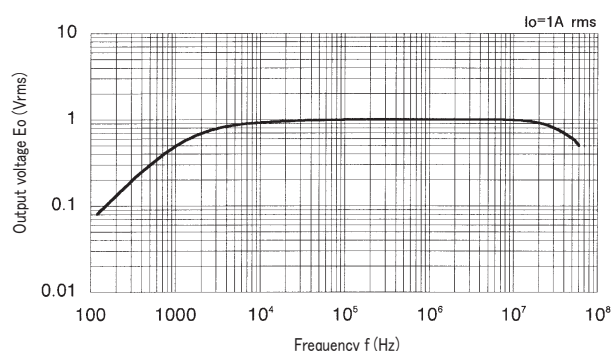
[Specification] $T_a=25^{\circ}\text{C}$

Model	CTL-28-S90-05Z-1R1-CL1
Primary current	0.01 ~ 10Arms
Frequency	2kHz ~ 30MHz (-3dB bandwidth)
Output sensitivity	1.0V / A $\pm 3\%$ (100kHz), $R_L=1\text{M}\Omega$ 0.5V / A $\pm 3\%$ (100kHz), $R_L=50\Omega$
Linearity	$\pm 3\%$ FS
Output impedance	50 Ω
Operating temperature	$-10^{\circ}\text{C} \sim +75^{\circ}\text{C}$
Storage temperature	$-20^{\circ}\text{C} \sim +85^{\circ}\text{C}$
Structure	Aluminum case, common frame ground
Output connector	BNC-R
Mass	approximately 360g

[Output voltage characteristics]



[Frequency characteristics]



Remark

- (1) No isolation between aluminum case and BNC-R connector by common ground. Isolate the measuring object if the isolated measurement is necessary
- (2) Only for high frequency current measurement more than 2kHz. Impossible to earn specified output sensitivity with commercial frequency 50/60Hz