

Small size current sensor for high current measurement

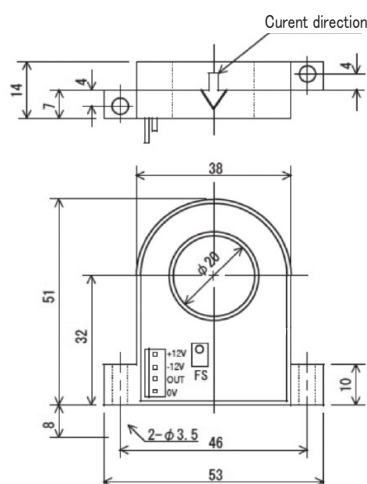


Model CTL-20-S40-10L-10

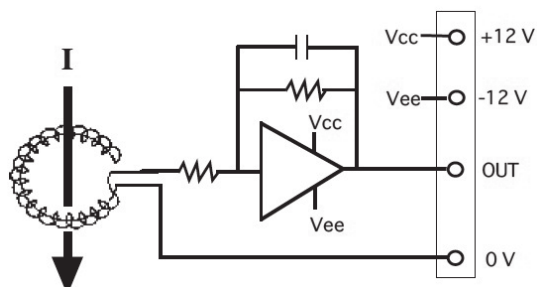
[Features]

- Possible to measure high current even if small and light
- Full scale 100A, 200A, 500A
- Wide frequency range

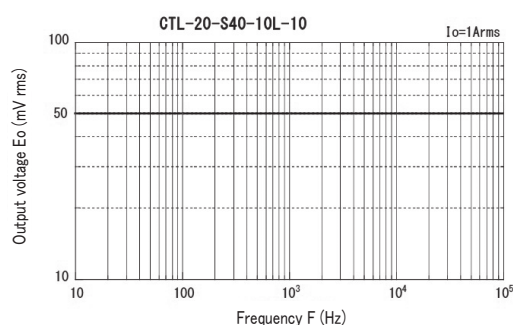
[Outline drawing]



[Block diagram]



[Frequency characteristics]



[Specification] Ta=25°C

Model	CTL-20-S40-10L-10	CTL-20-S40-10L-20	CTL-20-S40-10L-50
Rating current	100Arms	200Arms	500Arms
Output voltage	5Vrms/Rating current		
Residual voltage	Within $\pm 15\text{mV}$ (no load)		
Accuracy	Within $\pm 1\%\text{FS}$		
Linearity	Within $\pm 1\%\text{FS}$		
Response time	less than $2\ \mu\text{s}$		
Output voltage temperature coefficient	Within $\pm 0.03\% / ^\circ\text{C}$		
Residual voltage temperature coefficient	Within $\pm 0.3\text{mV} / ^\circ\text{C}$		
Frequency characteristic	10Hz \sim 100kHz (-3dB)		
Power supply	DC $\pm 12\text{V} \sim \pm 15\text{V}$ (less than 5mA)		
Operating temperature	$-10^\circ\text{C} \sim +60^\circ\text{C}$, $\leq 85\%\text{RH}$, no condensation		
Storage temperature	$-15^\circ\text{C} \sim +65^\circ\text{C}$, $\leq 85\%\text{RH}$, no condensation		
Output connector	5045-04 (Molex)		
Mass	approximately 33g		

[Output voltage characteristic]

