

UL certificated penetration type current sensor

UL certificated penetration type current sensor ($\phi 6$)

This product is the current sensor (CT) which certified UL 2808 (Outline of investigation for energy monitoring current transformers).

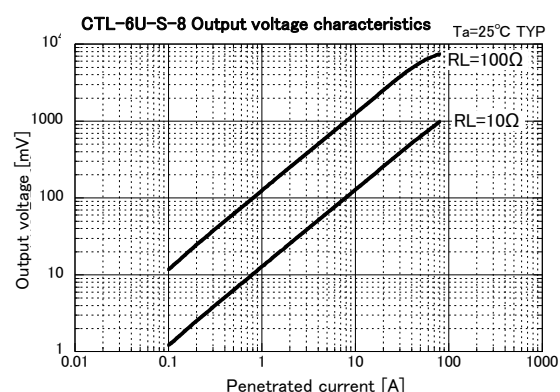
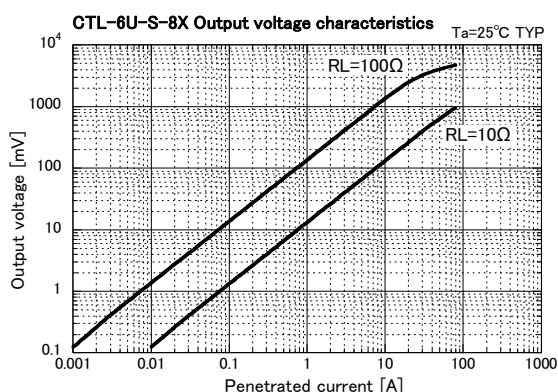
【ULfile No. E491055】

[Specification]

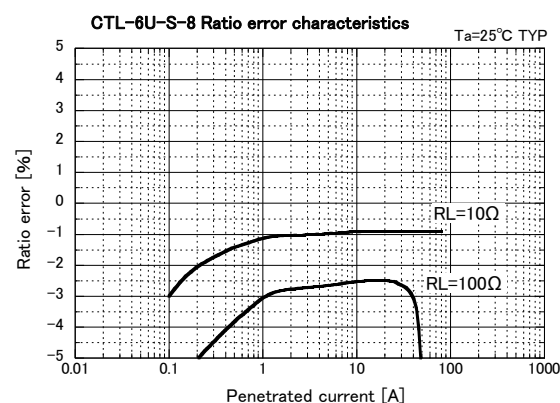
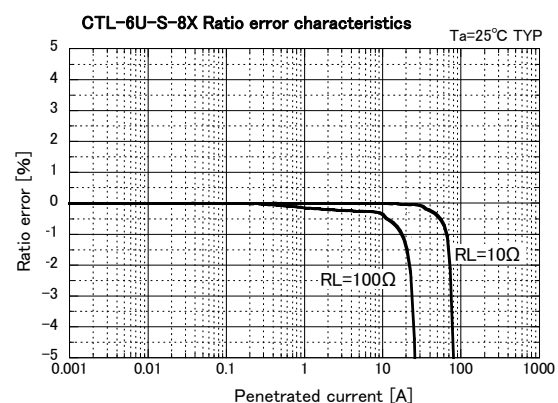
Ta=25°C TYP

Model	CTL-6U-S-8X	CTL-6U-S-8
Primary current	1mA~50A (50Hz/60Hz $RL \leq 10\Omega$)	0.1A~80A (50Hz/60Hz $RL \leq 10\Omega$)
Max. inrush current	80Arms (50Hz/60Hz sine wave)	80Arms (50Hz/60Hz sine wave)
Output characteristic	625mV $\pm 1\%$ /50A (50Hz/60Hz $RL=10\Omega$)	620mV $\pm 2\%$ /50A (50Hz/60Hz $RL=10\Omega$)
Applied wire	AWG24~AWG16 (only AWG18 for UL2808)	
Current ratio	800:1	
Secondary winding resistance	32 Ω (reference)	
Mass	approximately 27 g	approximately 29 g
Primary voltage	600Vac	
Withstand voltage	AC3310V, 1min (between case~output terminal in lump)	
Insulation resistance	DC500V, $\geq 100M\Omega$ (between case~output terminal in lump)	
Operating environment	Pollution Degree 2 CATIII	
Operating temperature	-20~+75°C, $\leq 90\%RH$, no condensation	
Storage temperature	-30~+90°C, $\leq 90\%RH$, no condensation	

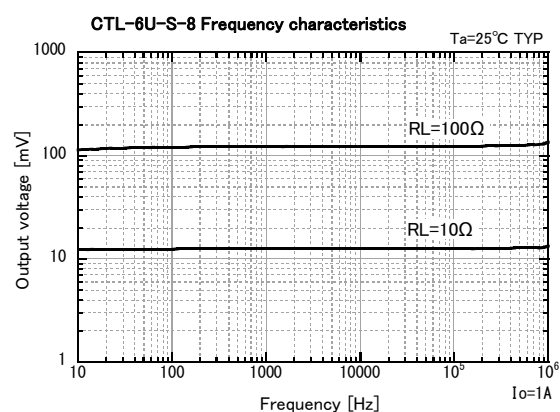
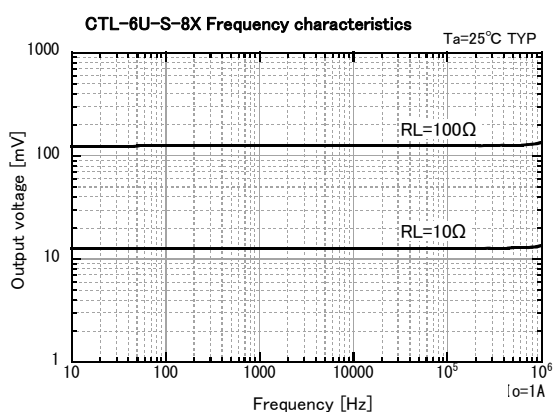
Output characteristics graph



Ratio error characteristics graph



Frequency characteristics graph

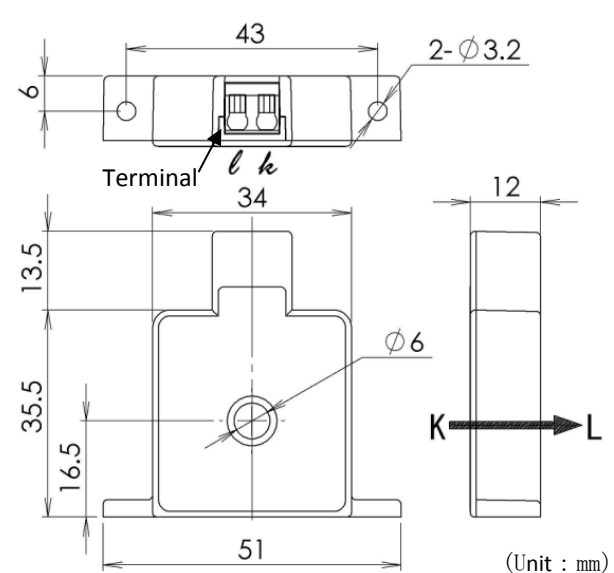


UL certificated penetration type current sensor
CTL-6U-S-8X (For precision measurement)
CTL-6U-S-8 (For general measurement)

[Outline Photo] (The photo is CTL-6U-S-8)



[Outline drawing] (Common to each model)



[Features]

- Lineup of two models for precision measurement (CTL-6U-S-8) and general measurement (large current compatible, CTL-6U-S-8).
- CTL-6U-S-4 (400: 1) items are also released at the same time.
- This product is a current sensor (CT) which certified UL 2808 (Outline of investigation for energy monitoring current transformers).
- The output terminal can be easily wired with a push-in mechanism.
- The UL certificated products of $\phi 12 \sim$ large diameter are also under planning. Please contact us.
- Ideal as a sensor for temperature controller for North America.

[Notes]

- (1) In the specifications of the product, and the description of the inspection, etc, it is based on the measurement in the environment of normal temperature, normal humidity, and other abnormalities, without any special description, and it does not guarantee the performance in the range of all temperature and operating condition.
- (2) Impossible to use in outdoor exposure.
- (3) Do not open the secondary during turn on absolutely, because of generation of high voltage and the possibility to damage the sensor.
- (4) In the case of UL certificated use, please wire according to the instruction manual.

- Specifications have the possibility to be changed without prior notice, for product improvement.
- It is also possible to produce special order items. Please contact us.

U.R.D.Co.,Ltd.

〒230-0045 1-1-52, Suehiro-cho, Tsurumi, Yokohama

TEL: 0081-45-502-3111